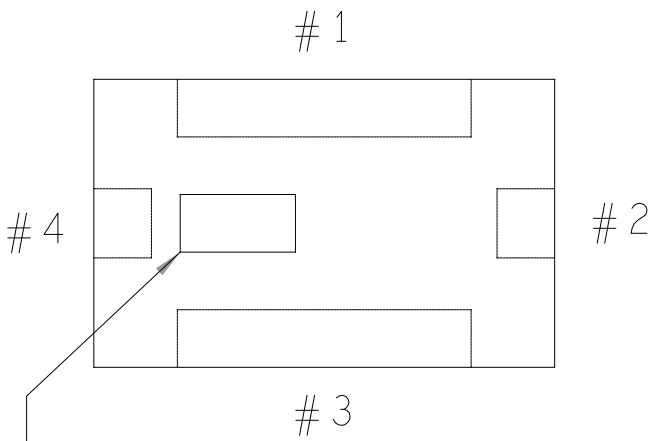


REVISIONS			
REV	DESCRIPTION	DATE	APPROVED
A	INITIAL RELEASE	03OCT19	T. CABILDO
B	AS PER ECR-095519	15JUL20	T. CABILDO
C	AS PER ECR-100230	10DEC20	T. CABILDO
D	AS PER ECR-103775	05OCT21	Z. ARCEO
E	AS PER ECR-105391	23NOV21	Z. ARCEO
F	AS PER ECR-111800	14DEC22	Z. ARCEO
G	AS PER ECR-113680	31MAR23	Z. ARCEO

ASSEMBLY NOTES:

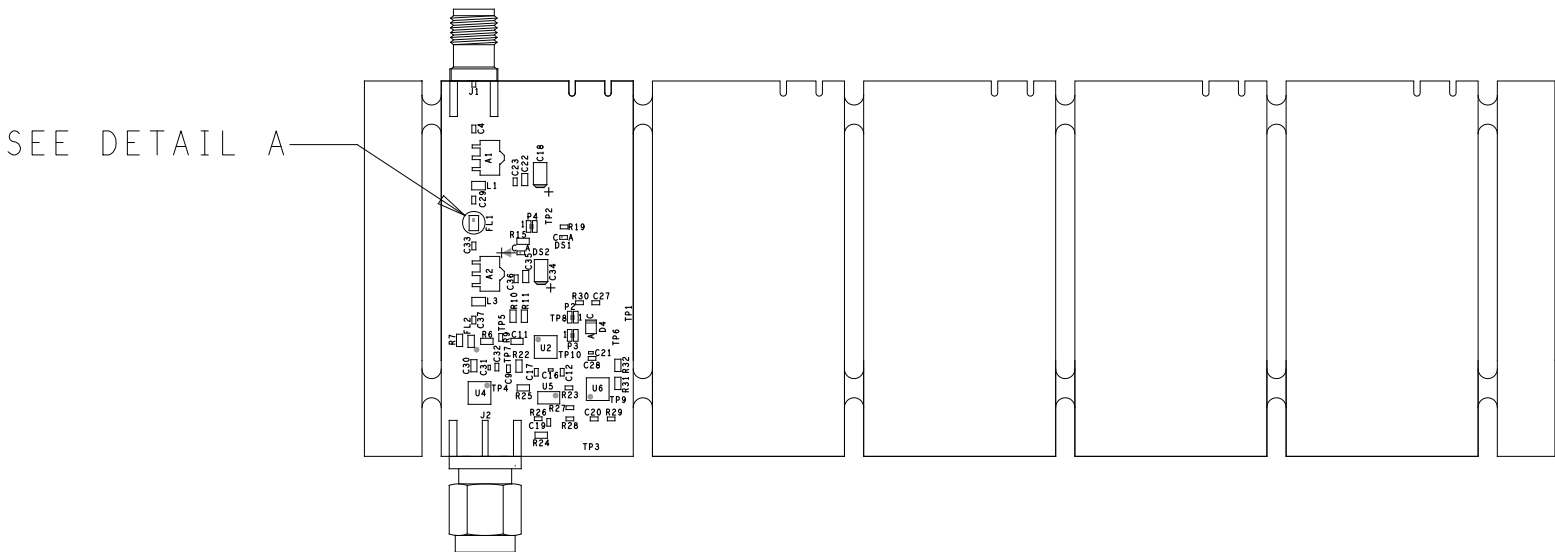
- BOARD ACCEPTABILITY PER ANALOG DEVICES, INC. SPECIFICATION TST00119 (LATEST REVISION).
- REPAIRS PER IPC-7711/21(LATEST REVISION) ARE ALLOWED.
- THIS BOARD CONTAINS ELECTROSTATIC DISCHARGE SENSITIVE DEVICES.
- PARTS INDICATED BELOW SHOULD BE MOUNTED MANUALLY:
 - J1, E049020, CONN-PCB SMA END LAUNCH JACK FLAT TAB FLANGE FOR 1.62MM PCB, 60312202114513
 - J2, E049019, CONN-PCB SMA END LAUNCH PLUG ROUND FOR 1.62MM PCB, 60314202124525
- RoHS COMPLIANCE: ASSEMBLY VENDOR SHOULD ASSURE COMPLIANCE WITH LEAD-FREE AND RoHS PCB ASSEMBLY STANDARDS (EU RoHS DIRECTIVE 2002/95/EC).
- ASSEMBLY VENDOR MUST SOLDER SHORT ON DEFAULT POSITION PIN 1 & 2 OF COMPONENT P2, P3 AND P4.
- ASSEMBLED BOARDS TO BE SHIPPED SINGULATED.
- SMOOTHEN EDGES AND FREE FROM BURRS AFTER DEPANELIZATION PROCESS.

DETAIL A
SCALE: NONE



Note: Actual device has a mark near terminal #4 as shown.

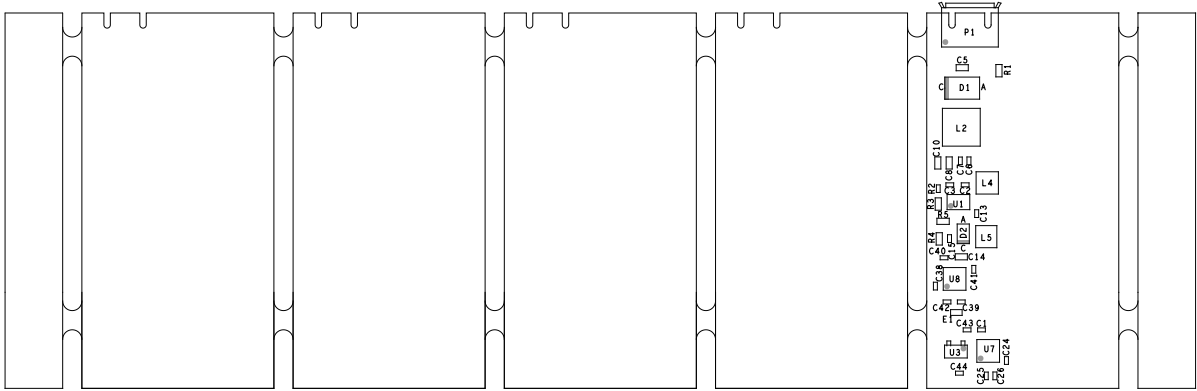
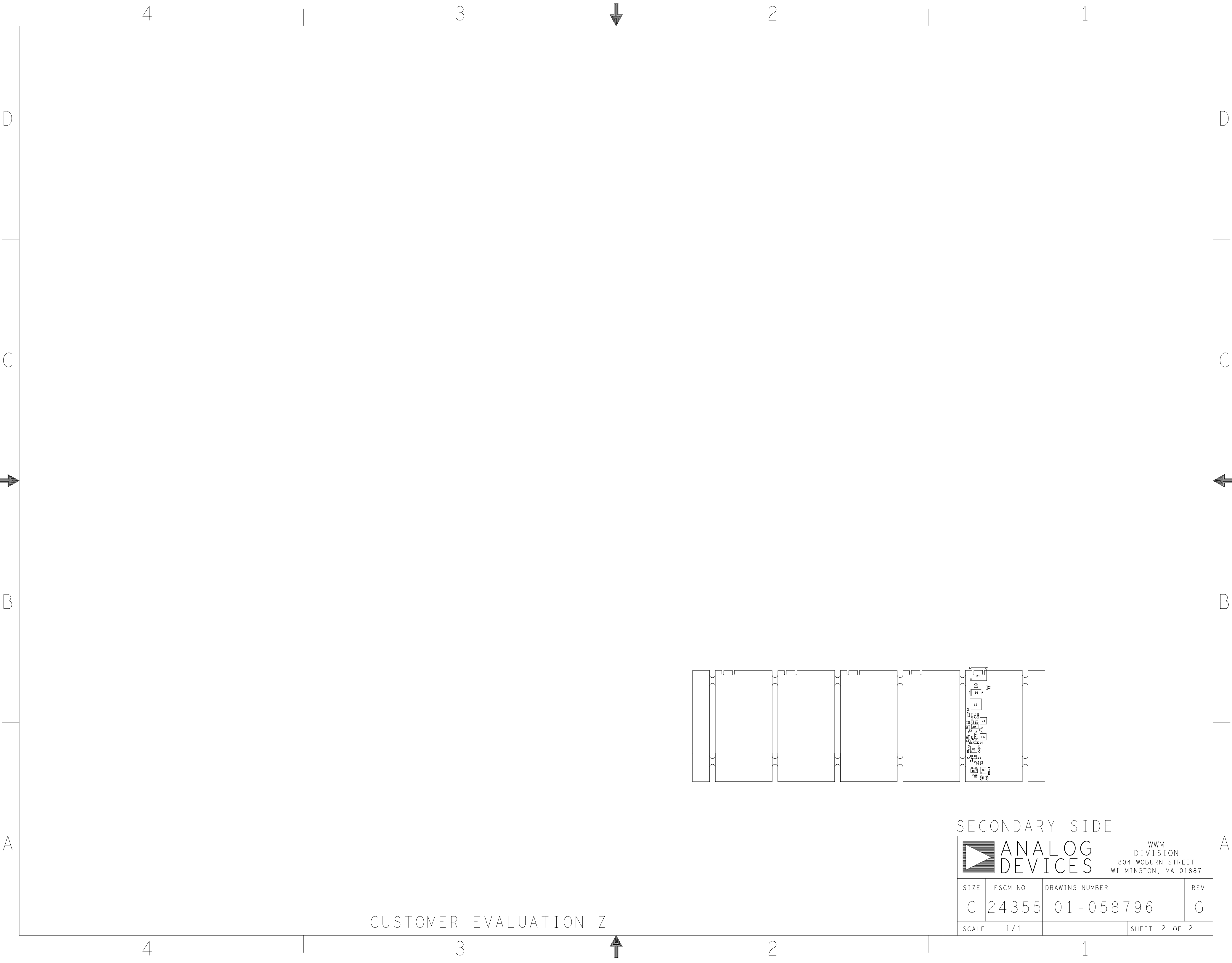
VIEWED FROM THE
PRIMARY SIDE



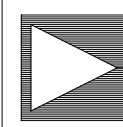
CUSTOMER EVALUATION Z

PRIMARY SIDE

UNLESS OTHERWISE SPECIFIED DIMENSIONS ARE IN INCHES			APPROVAL		DATE		<div><div></div><div>ANALOG DEVICES</div></div> <div>WWM DIVISION 804 WOBURN STREET WILMINGTON, MA 01887</div>								
TOLERANCES			TEMPLATE ENGINEER N/A												
DECIMALS	FRACTIONS	ANGLES	HARDWARE SERVICES M JOSE		03OCT19		TITLE ASSEMBLY EVAL - CN0521 - EBZ								
.XX .-.010 .XXX .-.005 .XXXX .-.0050	--1/32 -- 2	-- 2	HARDWARE SYSTEMS N/A												
MATERIAL			TEST ENGINEER N/A												
			COMPONENT ENGINEER N. BUENAFLOR		20DEC22										
			TEST PROCESS N/A												
			HARDWARE RELEASE K. JABATAN		03OCT19										
FINISH			DESIGNER M. NICOPOR		03OCT19		SIZE C								
			PTD ENGINEER T. CABILDO		03OCT19					FSCM NO 24355					
			CHECKER N/A										DRAWING NUMBER 01 - 058796		
DO NOT SCALE DWG							SCALE 1 / 1								
										SHEET 1 OF 2					



SECONDARY SIDE

		ANALOG DEVICES		WWM DIVISION 804 WOBURN STREET WILMINGTON, MA 01887	
		SIZE	FSCM NO	DRAWING NUMBER	REV
C		24355	01-058796		G
SCALE		1 / 1		SHEET 2 OF 2	

CUSTOMER EVALUATION Z